

Pendants for Fancy Cuts...



141-186
8x8, 9x9 or 10x10mm



141-080
4x4, 5x5, 6x6, 7x7, 8x8,
9x9, 10x10, 11x11,
12x12, 13x13, 14x14,
15x15 or 16x16mm



141-183
5x5, 6x6, 7x7, 8x8, 9x9,
10x10, 11x11 or 12x12mm



141-185
4x4, 5x5, 6x6, 7x7, 8x8,
9x9, 10x10 or 11x11mm

Trillions & Triangles...



141-184
8x8, or 9x9mm
+ (3) 2.5mm

Illustrations Life-Size

Squares...



141-070
6x6, 7x7, 8x8, 9x9,
10x10 or 11x11mm



141-174
4x4, 5x5, 6x6,
7x7 or 8x8mm



141-178
6x6, 7x7, 8x8, 9x9,
10x10 or 11x11mm



141-089
10x10, 11x11, 12x12,
13x13 or 14x14mm

Illustrations Life-Size



141-090
4x4, 5x5, 6x6, 7x7, 8x8,
9x9, 10x10, 11x11, 12x12,
13x13, 14x14, 15x15 or
16x16mm



141-030
5x5, 6x6, 7x7 or 8x8mm

Hearts...

Enhancers...



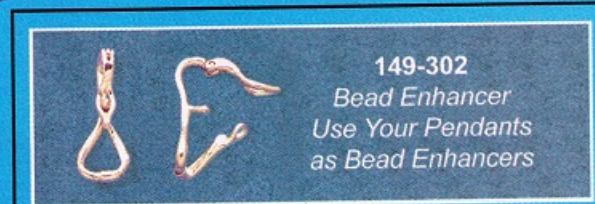
149-312
Convert-A-Bail
Change Pendants Easily
Fits Up to a 3mm Chain



149-314
Omega Convert-A-Bail
Fits Up to an 8mm Omega



-299 -300
149-299 or 300
Omega Enhancer Bail
Fits a 6 or 8mm Omega



149-302
Bead Enhancer
Use Your Pendants
as Bead Enhancers

Here's How to
Use the 149-302



Start in
this position...



Insert it into
the Pendant...



Push it to
the Center...



Close the
Swivel Latch
(Securing the
Pendant)



Attach it and
Snap the Clasp!